

**A WORLD PREMIERE**

**A RED  
ORCHID  
THEATRE**

# **THE TARGETED**

**BY HANNA KIME**

**DIRECTED BY GRACE DOLEZAL-NG**

**AT THE CHOPIN THEATRE**

presents

**A WORLD PREMIERE**

# THE TARGETED

**BY HANNA KIME**

**DIRECTED BY GRACE DOLEZAL-NG**

## **CAST** (in order of appearance)

Rhonda.....**KIRSTEN FITZGERALD**\*^  
Didi.....**NATALIE WEST**\*^  
Sherry.....**SADIEH RIFAI**\*^  
Jeff.....**LAWRENCE GRIMM**\*^  
Eric.....**GLENN OBRERO**  
Mia.....**STEPHANIE SHUM**

## **UNDERSTUDIES**

Sherry U/S.....**GABRIELA DIAZ**  
Mia U/S.....**AMY YESOM KIM**  
Didi U/S.....**CYNTHIA MARKER**  
Rhonda U/S.....**TATIANA PAVELA**  
Eric U/S.....**THOMAS B. TRAN**  
Jeff U/S.....**SCOTT WESTERMAN**

## **CREATIVE & PRODUCTION TEAM**

Scenic Designer.....**LAUREN M. NICHOLS**#  
Costume Designer.....**STEPHANIE CLUGGISH**#  
Lighting Designer.....**JOSIAH CROEGAERT**  
Sound Designer.....**ANGELA JOY BALDASARE**  
Props Designer.....**SPENCER DIAZ TOOTLE**  
Projections Designer.....**EME OSPINA-LÓPEZ**  
Violence & Intimacy Director.....**CHELS MORGAN**  
Assistant Director.....**JOJO BROWN**  
Dramaturg/Script Supervisor.....**DAN WASHELESKY**  
Technical Director.....**TOM DANIEL**  
Production Manager.....**JENNIFER APARICIO**^  
Stage Manager.....**ANNA VU**^  
Assistant Stage Manager.....**CARLI SHAPIRO**  
Assistant Stage Manager.....**MAGGIE PERISHO**  
Casting Director.....**KYLE STOFFERS**  
Master Electrician.....**QUINN CHISENHALL**  
Scenic Painter.....**MORGAN LASZLO**  
Scenic Overhire...**STEEL BROOKS, JASPER JOHNSON,**  
**MORGAN LASZLO, CAITLYN MCMANUS**  
Lighting Overhire...**HANNAH BOLSTAD, MARK BROWN,**  
**JACOB COATS, ALEXANDER**  
**WASHINGTON RILEY, CHELSEA STREBE**  
Volunteers.....**KIRK ANDERSON, EVAN ANDERSON**

# SPONSORS

Production Sponsors

**BARBARA & RANDY THOMAS**

Developmental Sponsor

**ANDREA MITCHEL**

Opening Night Partner



A Red Orchid's 33<sup>rd</sup> Season is sponsored by

**BAYLESS  
FAMILY  
FOUNDATION**

**HEIDI HOBLIT GRAHAM**

This program is partially supported by a grant from the Illinois Arts Council Agency. This project is partially supported by a CityArts Grant from the City of Chicago Department of Cultural Affairs & Special Events as well as additional support from support from the National Endowment for the Arts.

THE TARGETED artwork by Adam T. Crawford  
Photo of Ensemble Member Kirsten Fitzgerald by Jeff Kurysz  
Playbill design by Stephanie Shum

**PLEASE NOTE: VIDEOTAPING, PHOTOGRAPHING, OR  
TAKING AUDIO AND/OR VISUAL RECORDINGS OF THIS  
PRODUCTION OR DISTRIBUTING RECORDINGS OR  
PHOTOGRAPHS ON ANY MEDIUM, INCLUDING THE  
INTERNET, IS STRICTLY PROHIBITED, A VIOLATION OF  
THE AUTHOR'S RIGHTS AND ACTIONABLE UNDER  
UNITED STATES COPYRIGHT LAW.**



## **LAND ACKNOWLEDGEMENT**

A Red Orchid Theatre sits upon the traditional homelands of the Council of the Three Fires: The Ojibwe, Odawa, and Potawatomi Nations. Many other Tribes like the Miami, Ho-Chunk, Menominee, Sac, and Fox also called this area home. Located at the intersection of several great waterways, the land naturally became a site of travel and healing for many Tribes. American Indians continue to call this area home, and now Chicago is home to the sixth largest Urban American Indian community that still practices their heritage, traditions, and care for the land and waterways. Today, Chicago continues to be a place that calls many people from diverse backgrounds to live and gather here. Despite the many changes the city has experienced, both American Indians and A Red Orchid see the importance of the land and this place that has always been home to many diverse backgrounds and perspectives.

## **CONTENT WARNING**

Flashing lights, discussions of suicide/harm, mental health episodes/trauma, violence and blood.  
Brief references to sexual abuse, child abuse/neglect, and harm to animals

## **SPECIAL THANKS**

dado, Sherman Edwards, Jasper Johnson, John Judd, Travis A. Knight, Cynthia Marker, and Guy Van Swearingen



# A NOTE FROM PLAYWRIGHT HANNA KIME

I've often heard people describe *THE TARGETED* as "a play about conspiracy theorists," but I don't like that description.

For one thing, there are so many examples, through history and in current events, that demonstrate why we all should feel a deep distrust in our government, or our medical system, or our law enforcement. It is reasonable to believe that these apparatuses of power do not have our best interests at heart, and it is normal to feel like a cog in a machine too complex to understand. A Gen-Z progressive might diagnose the nefarious forces they believe are controlling everything very differently than a Targeted Individual would, but the shared experience of suspicion and doubt all emerge from existing in the same broken society. It is not crazy to feel exploited by those in charge, it is human.

Targeted Individuals are people who are suffering, and who are searching for an explanation. This play asks audiences to consider if it matters where a person thinks their pain comes from if that pain still feels very real.

I began writing *THE TARGETED* in 2019, as political tensions in this country were beginning to steeply escalate. Not only were people on different sides of the political spectrum holding opposing beliefs, but it was becoming clear that we were existing in fundamentally different realities, with simple facts of existence contested across the divide. That gulf has only grown deeper as time has passed, and the questions this play is asking – how can we remain in relationship with people we disagree with? Can we love someone who believes something we consider crazy? Can we love someone who believes something we consider harmful? – have become even more urgent.

Not every audience member will know a Targeted Individual personally, but everyone who sees the play will have someone in their life, perhaps a family member, perhaps a coworker, who believes something they cannot understand. While I don't think it's a play's job to offer a path forward, what this play does provide is a chance to look across that disagreement with empathy, to see the human on the other side, and to deeply feel the tragedy of that irreconcilable distance.

## PROFILES



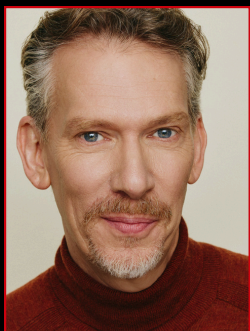
**KIRSTEN FITZGERALD** (Rhonda) [she/her] is a proud member of the Ensemble at A Red Orchid Theatre and has served as the Artistic Director since 2008. She was most recently onstage here last season in *THE CAVE*. Select AROT credits include *IN QUIETNESS*, *GREY HOUSE*, *TRAITOR*, *EVENING AT THE TALK HOUSE*, *THE ROOM*, *PILGRIM'S PROGRESS*, *MUDBLUE SKY*, *BUTCHER OF BARABOO*, *THE NEW ELECTRIC BALLROOM*, *ABIGAIL'S PARTY*, *PUMPGIRL*, *WEAPON OF MASS IMPACT*, and *THE SEA HORSE* (for which she was honored to receive a Jeff Award). She recently directed *BIRDS OF NORTH AMERICA* and previously directed *THE MOORS* at AROT, which earned her a Jeff Award for Best Director of a Play (Midsized). Other onstage credits include *SWING STATE* (Off-Broadway Minetta Lane Theatre, Goodman), *I HATE IT HERE*, *ROE*, *SWEAT* (Goodman); *MARY PAGE MARLOW*, *THE QUALMS*, *CLYBOURNE PARK* (Steppenwolf); *APPROPRIATE*, *LETTIE* (Victory Gardens), *MOTHERHOUSE* (Rivendell); and work with Chicago Shakes, Utah Shakes, Shattered Globe, Remy Bumpo, Plasticene, Prop, Defiant, and more. TV: "Shining Girls," "Somebody Somewhere," "The Exorcist," "Sirens," "Chicago Med/Fire/Justice," "Underemployed," "ER." Film: *RAIN REIGN*, *WIDOWS*, *WORKING MAN*. Representation: Grossman & Jack Talent.



**NATALIE WEST** (Didi) [she/her] has been an ensemble member of A Red Orchid since 2010. She has appeared in many productions including *THE CAVE*, *REVOLUTION*, *FULFILLMENT CENTER*, *TRAITOR*, and *EVENING AT THE TALKHOUSE*. She has performed in shows at the Goodman, Steppenwolf, Chicago Shakespeare, and Northlight. She is a former member of Remains Theatre. Natalie portrayed the character Crystal on the television show *Roseanne* and *The Conners*. She received Jeff awards for her work in *ABIGAIL'S PARTY* and *BUTCHER OF BARABOO* at A Red Orchid and *LIFE AND LIMB* at Wisdom Bridge.



**SADIEH RIFAI** (Sherry) [she/her] is an ensemble member at A Red Orchid Theatre. As a playwright, she recently had the world premiere of her play *THE CAVE* as part of the 32rd season. She's also performed in *DO YOU FEEL ANGER*, *AN EVENING AT THE TALK HOUSE*, and the world premiere of *GREY HOUSE*. Sadieh was also recently on stage at Steppenwolf in the production of *YOU WILL GET SICK* directed by Audrey Francis. Film credits include *THE WISE KIDS*, *NATE AND MARGARET*, *OLYMPIA* and *ALL HAPPY FAMILIES*. Television credits include "Chicago Med," Netflix's "Easy," CBS's "The Red Line," Amazon's "Patriot," Apple TV's "Shining Girls," TJ and Dave's pilot "Bettendorf Talks" and season three of HBO's "Somebody Somewhere." Sadieh is a graduate of the School at Steppenwolf and received the Princess Grace Award.



**LAWRENCE GRIMM** (Jeff) [he/him] is a founding ensemble member of A Red Orchid Theatre where some of his credits include: TURRET, TRAITOR, DO YOU FEEL ANGER?, SMALL MOUTH SOUNDS, 3C, TREVOR, IN A GARDEN, PUMPGIRL, and ABIGAIL'S PARTY among many others. Area credits: GASLIGHT and PRAYER FOR THE FRENCH REPUBLIC (Northlight), HANNAH AND MARTIN (Jeff Nomination- Actor), and THE HEAVENS ARE HUNG IN BLACK (Shattered Globe), KING CHARLES III, THE TEMPEST (Chicago Shakespeare Theatre), 2666 (Goodman Theatre), THE UPSTAIRS CONCIERGE (Goodman - New Stages), MY NAME IS ASHER LEV (Timeline Theatre), IN THE NEXT ROOM OR THE VIBRATOR PLAY (Victory Gardens), WELCOME HOME, JENNY SUTTER (Next Theatre), ORLANDO (Court Theatre), TWO BY PINTER (Piven Theater Workshop), THE GLASS MENAGERIE (Raven Theatre, Jeff Award - Actor), THE BROTHERS KARAMAZOV, 1984 (Lookingglass), I NEVER SANG FOR MY FATHER, WOLF LULLABY (Steppenwolf). Film credits: ERIC LARUE, NIGHT'S END, SLICE, CAPTIVE STATE, WELCOME TO ME, A PERFECT MANHATTAN, CICERO IN WINTER. Television: "Somebody, Somewhere" (HBO), "The Red Line" (CBS), "Chicago PD," "Chicago Med," "Chicago Fire" (NBC), "Late Night with Conan O'Brien" (NBC). More at [www.grimmactor.com](http://www.grimmactor.com).



**GLENN OBRERO** (Eric) [he/him] is excited to make his A Red Orchid Theatre debut! He was last seen in PIVOT (Rivendell Theatre Ensemble). Select Chicago theatre credits: A TALE OF TWO CITIES (Shattered Globe Theatre), THE GREAT LEAP (Steppenwolf Theatre), 20K LEAGUES UNDER THE SEA (Lookingglass Theatre), IRONBOUND (Raven Theatre), WIPEOUT (Rivendell Theatre Ensemble), and THE CHINESE LADY (Timeline Theatre). Regional theatre credits: BAREFOOT IN THE PARK and MISERY (Peninsula Players Theatre), EDITH CAN SHOOT THINGS AND HIT THEM (Kitchen Theatre), THE GREAT LEAP (Asolo Repertory Theatre). Film credits include: WHEN CATS FLY. TV credits include: "Chicago Fire" (NBC) and "nExt" (FOX). Glenn is a member of Rivendell Theatre Ensemble and represented by Gray Talent Group.



**STEPHANIE SHUM** (Mia) [she/her] previously appeared in REVOLUTION and THE MOORS and serves as the Marketing & Development Director at A Red Orchid Theatre. Other credits include THE CRUCIBLE, YOU WILL GET SICK, BALD SISTERS, THE GREAT LEAP (Steppenwolf); HUMMINGBIRD (Goodman); GORGEOUS (Raven/Rivendell); ONE PARTY CONSENT (First Floor); DOGS (Red, Jeff Nomination - Performer in a Supporting Role); MOTHERS (Gift); MEN ON BOATS (American Theater Company); A STORY TOLD IN 7 FIGHTS (Neo-Futurists); LOVE IN THE TIME OF JONESTOWN, SMALL WORLD, KATE AND SAM ARE NOT BREAKING UP (The New Coordinates, selected); CHRISTMAS CAROL, TIGER STYLE! (TheatreSquared); among others. Stephanie is a graduate of the School at Steppenwolf and is represented by Gray Talent Group. [stephanieshum.com](http://stephanieshum.com)



**GABRIELA DIAZ** (Sherry U/S) [she/her] is an actor/director with Houston roots and Chicago flowers. She is honored to be working with A Red Orchid Theatre for the first time! She is an ensemble member of Olde School Shakespeare Collective, and Avalanche Theatre, Development Director at Bramble Theatre Company, and co-creator of The Tramps. This year, Gaby is playing Hotspur in HENRY IV, producing and acting in THE GROWN UPS (Independent Productions Initiative), assisting in the development of UPLINE with Avalanche, and returning this fall for the premiere of THEY BROKE UP! Endless thanks to her love, her light, her cat, Vacía.



**AMY YESOM KIM** (Mia U/S) [she/her] is thrilled to be back at A Red Orchid Theatre! Recent theatre credits include VEAL (A Red Orchid), THE STINKY CHEESE MAN AND OTHER FAIRLY STUPID TALES Tour (Griffin), THE SNOW QUEEN (Marriott), and THE SPONGEBOB MUSICAL (Kokandy). She is a graduate of the Chicago College of Performing Arts at Roosevelt University. Outside of acting, Amy is an early childhood educator specializing in arts, music, and movement at Bubbles Academy. She is proudly represented by Gray Talent Group. @amyyesom | [amyyesomkim.com](http://amyyesomkim.com)



**CYNTHIA MARKER** (Didi U/S) [she/her] is a proud member of Steep where she appeared in MOMENT, EARTHQUAKES IN LONDON, BIRDLAND, LINDA, MOSQUITOS, and LIGHT FALLS. Recent projects include First Floor's ONE PARTY CONSENT and Griffin's GIRLS AND BOYS for which she received a Non-Equity Jeff Award for Best Solo Performer. She is thrilled to work with this wonderful cast and crew at Red Orchid. Merci, comme toujours, à toute ma famille pour leur amour et leur soutien.



**TATIANA PAVELA** (Rhonda U/S) [she/her] is an actor, writer, teacher and all-around theater maker. Chicago theater: THE CAVE (Bonnie u/s, A Red Orchid Theatre), HOW TO TRANSCEND A HAPPY MARRIAGE (George, Redtwist Theater), DOGS (Carol, Red Theater - Jeff Nom., Best Ensemble), HAMLET (Lead Player, Red Theater), TWELFTH NIGHT (Maria, Midsommer Flight), HURRICANE DIANE (u/s Pam & Carol, Theater Wit). Film: LUCY IS A LOSER. TV: "Chicago Fire." MFA from University of Washington PATP; BFA from NYU Tisch School of the Arts. Repped by DDO Artists Agency; [www.tatianapavela.com](http://www.tatianapavela.com)



**THOMAS B. TRAN** (Eric U/S) [he/him] is excited to make his A Red Orchid Theatre debut. Chicago: HOLIDAY (Goodman Theatre); DYNASTY BABIES (The Second City); ROSENCRANTZ AND GUILDENSTERN ARE DEAD, THE DRUNKEN CITY, A WRINKLE IN TIME, PASSAGE, and SHE KILLS MONSTERS (The Theatre School at DePaul University). Regional: THE TRIAL OF ODYSSEUS (Hydrama Theatre). TV: "Power Book IV: Force" (STARZ). Thomas is an Asian-American artist from St. Louis, Missouri and a proud graduate from The Theatre School at DePaul University. He is represented by Paonessa Talent. Instagram: @thomasbtran



**SCOTT WESTERMAN** (Jeff U/S) [he/him] is thrilled to be working with A Red Orchid Theatre for the second time having understudied John Judd in SIX MEN DRESSED LIKE JOSEPH STALIN. Chicago: GODS & MONSTERS (Frame of Reference); ROMEO & JULIET (Chicago Shakespeare); EURYDICE (Snails On A Bike); LADY (Northlight); FOOL FOR LOVE U/S (Steppenwolf); TRANSLATIONS U/S (Writers); KRAPP'S LAST TAPE (Haven Chicago); SUPERIOR DONUTS (The Artistic Home); WATER (Chicago Dramatists); MARATHON 33 (Best Ensemble Jeff Award) (Strawdog). Regional: Ford's Theatre; The Shakespeare Theatre; Everyman Theatre; Barter Theatre; The Warehouse Theatre. On Camera: "Chicago Fire," "Prison Break," MACHINE GUNE PREACHER, HEIST 88. [ScottWesterman.org](http://ScottWesterman.org)



**KAMEHACHI**  
CHICAGO'S ORIGINAL SUSHI BAR

**OLD TOWN CHICAGO**  
1531 N. WELLS STREET  
**NORTHBROOK IL**  
1320 SHERMER ROAD

[WWW.KAMEHACHI.COM](http://WWW.KAMEHACHI.COM) | 312-664-3663





**HANNA KIME** (Playwright) [she/her] is a Jeff-Nominated Chicago-based playwright and screenwriter originally from St. Louis, Missouri. Her full-length work has been presented or developed with companies such as Benson Drive Productions (George Strus), the Goodman, Berkeley Rep, St. Louis Shakespeare Festival, A Red Orchid, Steep, [producingbody], The Understudy: Coffee and Books, Bramble, Sideshow, where she was an ensemble member, First Floor, where she previously served as Literary Manager, among others. Most recently, her play DOGS had its world premiere at Red Theater. This spring, her play THE BEST DAMN THING will receive its Seattle Premiere at Dacha Theatre. Kime is a two-time O'Neill Finalist, was the winner of OKC Rep's New Voices Contest, and has been named a semifinalist for the Bay Area Playwrights Festival, Ashland New Play Festival, and Premiere Stages Play Festival. She holds degrees from the University of Chicago in English and Gender and Sexuality Studies. She is represented by UTA and managed by Curate. Special thanks to Alex.



**GRACE DOLEZAL-NG** (Director) [she/her] is a Chicago-based director passionate about building empathy and generating empowerment through visceral storytelling. DIRECTOR: BAKED! (Theo), THE BEST DAMN THING (The Understudy), RADIAL GRADIENT (Shattered Globe), DESPIERTA! (Lime Arts), DEATH FOR SYDNEY BLACK (Independent) and developmental work with Bramble Theatre, The Plaigarists, APIDA Arts, and more. ASSISTANT DIRECTOR: IT CAME FROM OUTER SPACE (Chicago Shakespeare Theatre), ATHENA (Writers Theatre), ROE (Goodman Theatre), THE GREAT LEAP (Asolo Repertory Theatre). By day, Grace is Casting Coordinator at Goodman Theatre. [www.gracedn.com](http://www.gracedn.com)

**LAUREN M. NICHOLS** (Scenic Designer) [she/her] is a designer native to Chicago. Recent credits include designs for Kentucky Opera, Writers, Drury Lane, Milwaukee Rep, Paramount, Marriott, Olney Theatre in Maryland, and Renaissance Theaterworks. She has also designed for Peninsula Players, Court Theatre, Rivendell, Lifeline, Steppenwolf, Steep, Jackalope, Harper College, Shattered Globe, Village Theatre in Seattle, Metropolis, The Gift Theatre, Firebrand, Raven, Boho, and Remy Bumpo. As a design associate she has worked on dozens of productions all over the country as a draftsman and model-maker. In 2025 she received a Jeff award for her work with Teatro Vista. She is currently in her 5th year as an adjunct professor at The Theatre School-DePaul University. MFA Northwestern. Member USA829. [laurenangeldesigns.com](http://laurenangeldesigns.com)

**STEPHANIE CLUGGISH** (Costume Designer) [she/her] A Chicago-based designer, Stephanie specializes in theatre and opera; she is delighted to return to A Red Orchid, where she designed costumes for FULFILLMENT CENTER and DO YOU FEEL ANGER. Other Chicago credits include Haymarket Opera Company, Steppenwolf Theatre, Rivendell, The Gift, Northlight Theatres and many more. Regional: Penobscot Theatre, Fine Arts Center and Theatreworks Colorado, Wolf Trap Opera, Charlottesville Opera, Theatre Raleigh, and the Music Academy of the West. She is a Clinical Associate Professor of Costume Design and Technology at the University of Illinois Chicago and a proud member of USA829, where she is Co-Chair of the Costume Department United Best Practices Committee. See more at [stephanie-cluggish.com](http://stephanie-cluggish.com)

**JOSIAH CROEGAERT** (Lighting Designer) [he/him] is excited to be back at Red Orchid where he designed his first professional show, and to be working with Grace Dolezal-Ng after collaborating on BAKED!. RED ORCHID: LAST HERNANOS. CHICAGO: THE SHAPE OF THE BONES (NTP), RISING WATER (Theatre L'Acadie), SMOKEFALL (Wild Door), JESUS HOPPED THE 'A' TRAIN (City Lit), HONEYPOT (Fleetwood Jourdain/Northwestern), PRO-AM (First Floor), MOTHERS (The Gift), SONDHEIM TRIBUTE REVIEW, BAKED!, BEST LITTLE WHOREHOUSE IN TEXAS (Theo Ubique) CO-DESIGN: FREDERICK (Chicago Children's), THE HEART SELLERS (Northlight), FALSETTOS (Court/TimeLine) REGIONAL: JACOB MARLEY'S CHRISTMAS CAROL, YOUNG FRANKENSTEIN, EVERY CHRISTMAS STORY, CABARET (Breckenridge). Graduate of Columbia College Chicago. [Josiahcrodesign.com](http://Josiahcrodesign.com)

**ANGELA JOY BALDASARE** (Sound Designer) [she/her] Select Sound Design Credits: SIX MEN DRESSED LIKE JOSEPH STALIN, A Red Orchid Theatre (sound designer), EVERY BRILLIANT THING, Writers Theatre (co-sound designer), BIG WHITE FOG, Court Theater, (assistant sound designer), LITTLE BEAR RIDGE ROAD, Steppenwolf Theatre (assistant sound designer), UNNECESSARY FARCE, Buffalo Theatre Ensemble (assistant sound designer), DANCE NATION, University of Illinois Chicago (sound designer), OUR TOWN, Illinois Shakespeare Festival (sound designer), ROMEO & JULIET, Illinois Shakespeare Festival (sound designer), TWO GENTLEMEN OF VERONA, Illinois Shakespeare Festival (sound designer), THE PETS, Bramble Theatre Company (sound designer) BOTTLE FLY, Redtwist Theatre (sound designer), WOLVES, Redtwist Theatre (sound designer), I, CUSTER, The Den Theatre (sound designer), Awards: The Michael Philippi Prize for Best Exhibit: Professional Designer (2024) Website: [angelajoybaldasare.com/sound-design](http://angelajoybaldasare.com/sound-design)

**SPENCER DIAZ TOOTLE** (Props Designer) [she/her] is excited to return to A Red Orchid Theatre! She previously designed for A Red Orchid's BIRDS OF NORTH AMERICA. Other design credits include AT THE WAKE OF A DEAD DRAG QUEEN (The Story Theatre) and POT GIRLS (The Story Theatre). Performing credits include The Story Theatre (THE LOVE OBJECT), The Second City (THE BEST DECISION YOU EVER MADE, WELCOME TO THE PARTY, PEANUT BUTTER JELLY TIME) and Steppenwolf Lookout Series (PREACH: THE BLOCK PARTY, LADYLIKE, FUKHAUS LIVE). Her first play, LAS FANTASMAS Y FRIDA KAHLO was awarded the Chicago DCASE New Play Residency and she is an NBCUniversal Bob Curry Fellow. Spencer is one half of CHISME, a todo Latine y todo queer showcase. You can find and follow her journey on instagram @spencerdiaztootle.

**EME OSPINA-LÓPEZ** (Projections Designer) [they/él] Born and raised in Bogotá, Colombia, Eme is a shapeshifting storyteller and trans activist, growing and nurturing community roots in Chicago. Eme dedicates themselves to stories that defy erasure and engage us with our responsibilities in the making of liberated futures. They move with the conviction that being co-creators of collective rituals, we are imbuing how deeply connected our struggles and freedoms are to one another's, illuminating how critically our dreams rely on learning to disarm what destroys us and rebuild together. Eme is grateful for the opportunity to join A Red Orchid Theatre again in bringing new works to life.

**CHELS MORGAN** (Violence & Intimacy Director) [they/them] is an intimacy, violence and movement director, AASECT Certified Sexuality Educator, professor at DePaul University, and the Director of Accessibility at the Intimacy Professionals Education Collective (IPEC). Chicago credits include 42 BALLOONS, BILLIE JEAN, PARANORMAL ACTIVITY (Chicago Shakespeare); ICEBOY!, THE BRIEF WONDROUS LIFE OF OSCAR WAO, MA RAINEY'S BLACK BOTTOM (The Goodman); SAFRONIA (Lyric Opera); SHE WHO DARED (Chicago Opera Theatre); MODERN GENTLEMAN (About Face Theatre); INTO THE WOODS, HAIR (Kokandy). OFF-BROADWAY: HOW TO DEFEND YOURSELF (New York Theatre Workshop). REGIONAL: JOE TURNER'S COME AND GONE (Indiana Rep, Syracuse Stage); DESTINY OF DESIRE (The Old Globe).

**JOJO BROWN** (Assistant Director) [she/her] is pleased to return to A Red Orchid Theatre, where her previous credits include performing in THE ROOM and VEAL, and serving as dramaturg for BIRDS OF NORTH AMERICA. Having contributed to every production in the current season, Jojo is deeply grateful to the AROT community for providing a vital creative home and support system. She looks forward to growing with the company and dedicates her work to her mother.

**DAN WASHELESKY** (Dramaturg/Script Supervisor) [they/he] is a Chicago-based director, dramaturg, playwright, teaching artist, and the Managing Director of Bramble Theatre Company. Previously they served as Managing Director at The Passage Theatre, Director of New Play Development at Valiant Theatre, and Head of Dramaturgy at First Run Theatre. Dan has also worked with Manhattan Theatre Club, Steppenwolf Theatre, Paramount Theatre, Silk Road Cultural Center, Stage Center Theatre, Avalanche Theatre, Eclectic Full Contact Theatre, St. Louis Actors' Studio, Tennessee Williams Festival St. Louis, and Dacha Theatre. MA: Washington University in St. Louis.

**TOM DANIEL** (Technical Director) [he/him] is proud to have worked with the wonderful folks at A Red Orchid for over three years now! Tom recently built BIRDS OF NORTH AMERICA, SIX MEN DRESSED LIKE JOSEPH STALIN, and has savored working on THE TARGETED. He recently served as technical director for THINGS WITH FRIENDS, GOLDEN LEAF RAGTIME BLUES and MISERY at American Blues Theater. Other set builds include ENDGAME, and DATE for Facility Theatre. Tom would like to thank Kirsten, Jennifer, Grace, Mcmanus, Morgan, Steel, Kirk, Evan and Jasper.

**JENNIFER APARICIO** (Production Manager) [she/her] has been working in the Chicago theater scene for the past several years as a freelance Production Manager and Equity Stage Manager. She previously worked with AROT as a Sub SM on VEAL. She is an Ensemble Member and the resident Production Manager with The Gift Theatre and is a member of Actors' Equity Association.

**ANNA VU** (Stage Manager) [she/her] is a Chicago-based stage manager originally from Atlanta, GA. Select Chicago credits include: UNCLE VANYA, THE SHAPE OF THE BONES (The New Theatre Project); THE TAMING OF THE SHREW (Court Theatre); SHORT SHAKES! HAMLET, SUNNY AFTERNOON, RICHARD III, THE ODYSSEY with A.B.L.E. (Chicago Shakespeare Theater); THE COLOR PURPLE, TONI STONE (Goodman Theatre); LOVE SONG, BLUES FOR AN ALABAMA SKY, GALILEO'S DAUGHTER (Remy Bumppo); DREAM HOUSE, CORONATION (Refracted). Some regional credits include: MURDER ON THE ORIENT EXPRESS, OVER THE RIVER AND THROUGH THE WOODS (Cortland Repertory Theatre); PERICLES, THE COMEDY OF ERRORS (Utah Shakespeare Festival). Vu received a BFA in theatre management from Auburn University. She is an Associate Artist with Remy Bumppo. Much love to Kenny the dog. <https://vuanna.weebly.com>

**CARLI SHAPIRO** (Assistant Stage Manager) [they/them] is a Chicago based freelance stage manager and thrilled to be joining the Red Orchid Team! Carli is from Long Island, NY and is a graduate of Elon University TDT. Recent Chicago credits include DIAL M FOR MURDER (Drury Lane), LITTLE SHOP OF HORRORS (Music Theatre Works), 'THE IRISH AND HOW THEY GOT THAT WAY and FUN HOME (Porchlight Music Theatre). Select regional credits include 25<sup>TH</sup> ANNUAL...SPELLING BEE, PIPPIN, and JESUS CHRIST SUPERSTAR (Timberlake Playhouse), HAIR, MURDER ON THE ORIENT EXPRESS, and KISS ME, KATE! (Cortland Repertory Theatre). Instagram: @carlixtheatre

**MAGGIE PERISHO** (Assistant Stage Manager) [she/her] is so excited to be back at A Red Orchid Theatre! She last was as at AROT as an assistant director for REVOLUTION. Her other recent works include ONE PARTY CONSENT, PRO-AM (First Floor Theater), NEW YEAR, NEW WORKS! (Adams Theatre Company). She graduated with a B.S in Production Directing from Ball State University. She would like to thank her lovely family and friends, her Half Acre and Chicago Shakespeare coworkers, and most of all herself! Good job! Enjoy the show!

# The Understudy

COFFEE SHOP,  
THEATRE BOOKSTORE,



ARTIST HANGOUT,  
INSPIRATION HUB, ETC...

5531 N. CLARK ST.



THEUNDERSTUDY.COM



# SUPPORTERS



PAUL M. ANGELL  
FAMILY FOUNDATION

BAYLESS  
FAMILY  
FOUNDATION



Illinois  
**ARTS**  
Council

NATIONAL  
ENDOWMENT  
for the **ARTS**  
arts.gov



**THE SAINTS**  
Volunteers for the Performing Arts



THE  
SERVICE  
CLUB  
OF  
CHICAGO  
ESTABLISHED 1890

## INDIVIDUAL SUPPORTERS

A Red Orchid gratefully acknowledges the following individuals whose donations were received between May 1, 2025 and April 30, 2026. To join these distinguished individuals and become a vital part of the organization, please contact Marketing & Development Director Stephanie Shum at [stephanie@aredorchidtheatre.org](mailto:stephanie@aredorchidtheatre.org).

### **\$20,000 +**

Anonymous • Heidi Hoblit Graham • The Zell Family Foundation

### **\$10,000 - \$19,999**

Anonymous in honor of Audrey Billings-Stone • Monica Byrd • Becky Coleman • Barbara & Randy Thomas

### **\$5,000 - \$9,999**

Jennifer Baumann • Nancy Breseke • Robin & Hugh Breslin • Terrance & Carol Coleman • Erin Grodnick • Andrea Mitchel • Tom Shapiro and Madeleine Grynsztejn • Geoffrey Smith and Catherine Stewart • Tom South • John Supera

### **\$1,000 - \$4,999**

John Balfe • Henry and Leigh Bienen • John Bierbusse • John and Claudia Boatright • Danielle Burns • Ed Calkins • Greg Cameron • Elizabeth Derrico • Al Devaney & Marla Forbes • John Tielsch and Deborah Garber • C. Matthew Geesman • Virginia Gerst • Leonard Goodman • Edward Jeske and John Hern • Helene Heydemann • Lina Hilko • Eileen Hirsch • Michael Hirsch • Jennifer Jelsema • John Judd • Frances Judd • Dawn & Jim Kink • Karen and Avram Lothan • Jane Madden • Rebecca and Wilbur Mills • Denise Nitterhouse • Erin Roberts • Lynn Hauser & Neil Ross • Susan Schwartz • Judith and David Sensibar • Margaret Stone in honor of Guy Van Swearingen • Audrey and Nick Stone • Christian Chadd Taylor • Nancy and Michael Timmers • Guy Van Swearingen • Kelly Wey • Adam J. Woods • Dave & Susannah Wydman

### **\$500 - \$999**

Anonymous (2) • Anonymous in honor of Kirsten Fitzgerald • Shannon Bachelder • Merrill Barden • Georgia Casciato • Tom Daniel • Leonora Dickson • David Frej • Peter and Lynn Gillespie • Victor Grimm • Dozie Ibekwe • Hallie Palladino • David Perry • Lisa Reep • Karen & Frank Schneider • Scott Smith • Chris Toft • Bryan Vanderhoof • Danielle Zuckerman

## INDIVIDUAL SUPPORTERS

### \$100 - \$499

Anonymous (10) • John T Ahern Jr • Dixie Albertsen • Ian & Rachel Alderman • Jacob Alexander • Michael Bassett • LC Bernadine • Barbara Billhardt • Mary M Blankenheim • Kay Bowman • Julia Brown • Archibald Bryant • Barry Carlson • Jack Chalmers • Cynthia Cheski and Scott Elliott • Alexandra Chopson • Robert Cohen • Winston Cutler • Shelley Daniels • Brenda Davis • Daniel Dever • Sahar Dika • Deanna Dunagan • Kenneth East & Timothy Thurlow • Sharon Epstein and JC • Susan Feibus & Tom Geoghegan • Abby Lee • Carl Ferrono • Mia Fitzgerald • Ilyssa Fradin • Judith R. Freeman • Laura Fudacz • Andrew Gelman in honor of Heidi and Andy Graham • Jaye Golanty • Cindy Gold • James and Gale Grumley • Susan Haimes • John Harris • Tom Herman • Mark & Sheila Hevrdejs • Donna J. Higgins • James Darwin Hobart in honor of Sadieh Rifai • Rick Holland • Susan Horn • Mary Hopkins • Caroline Horist • Mary Slivon and Doug Hurdelbrink • Dustin James • Tony Karman • Greg Legan • Gloria Lehr • Wendy Leifer • Giles Lemmens • Allison and Brad Levin • Dr Paul M Lisnek • Roseanne Lucianek • Clio McConnell • Meghan McDonough • Ellen Miller • Vivian Mitchel • Jen and Pete Moore • Karen Mozer • Lorry Murphy • Patrick Nevis • Susan Noel • Lois Margaret Nora • Brad Norrick • Deborah Oestreicher and Victor Magar • Maurice Pescitelli • Beverly Pinaire • Steven Redfield and Patricia Pippert • Carol Polakoff • Mr. John Levine & Ms. Merril Prager • Jennifer Quinn • Tom and Donna Ray • Ari Roth • Nancy Schaefer • Mackenzie Schleyer • Ellen Shannon • Kate M Sheehy • Mary Beth Sova & Peter Handler • David Sperling in honor of Doug Vickers • Jodi Stern • Dorota Stobierska • Kyle Stoffers and Sininchai Sommeechai • Rory Sullivan • Tom Szidon • Fred Tadrowski & Julie Berggren • Jane Terp • Judith Becker Thomas • Martin Till • Melissa Van Kersen • Robert Veasey • Mary Ward • Janine Warell • Timothy Weinert • India Whiteside • Tilly Wilhoite • Katherine Willhoite & Rodd Zolkos • Nancy Young • Bobbi Zabel

## OLD TOWN DINING PARTNERS



## GRIT & GLIMMER

A Red Orchid gratefully acknowledges the following sponsors and in-kind donors from Grit & Glimmer 2026, our annual gala.



About Face Theatre • Acting Studio of Chicago • AIR Aerial Fitness • American Blues Theater • American Writers Museum • Annoyance Theatre • Atelier • Avondale Bowl • Babes with Blades • Becky Coleman • Black Box Acting • Black Ensemble Theater • Brooklyn Boulders • Chicago Bird Alliance • Chicago Fire • Chicago Magic Lounge • Chicago Shakespeare Theater • Chicago Symphony Orchestra • Chicago Wolves • Chicago Youth Symphony Orchestra • Cooper's Hawk • Drunk Shakespeare • Edgewater Candles • Empty Bottle • First Ascent Climbing • First Floor Theater • Five Iron Golf • Flagship Restaurant Group • Flyover • Fox in a Box • Garfield's Beverage (Old Town) • Goodman Theatre • Hell in a Handbag/David Cerda • Home Chef • Jackie Melissas • Jeni's Splendid Ice Creams • John Judd • Jojo's Shake Bar • Kamehachi • Keith Moore • Kelly Wey • Kokandy Productions • Kristen Neveu • Lakeshore Sports & Fitness • Lettuce Entertain You • Lou Malnati's • Matthew Brett • Merz Apothecary • Mojo Spa • MomNPop Hospitality • Morton Arboretum • Museum of Illusions • Navy Pier • Oak Park Festival Theatre • Pinot's Palette • PR Wine International • Raven Theatre • Redtwist Theatre • Remy Bumppo • Sanders Fine Portraits • Scratch Goods • Soho House • Steppenwolf Theatre • StudioUs • Nick Stone • The Neo-Futurists • The Spice House • Theatre Above the Law • Theo Ubique • Timeline Theatre • Trap Door Theatre • Wagner Johnson Productions • White Sox • Willow Room • WNDR Museum • Writers Theatre • Zanies



# CONSIDER A DONATION

Artists, patrons, and donors, alike, invest in a relationship with A Red Orchid Theatre; a mutual agreement borne of their trust and our continuing effort to challenge ourselves and our audience. We invite you to become an ever more essential part of the process.





# A RED ORCHID THEATRE

## **ENSEMBLE MEMBERS:**

Brett Neveu • dado • Danny McCarthy • Doug Vickers •  
Esteban Andres Cruz • Grant Sabin • Guy Van Swearingen •  
Jennifer Engstrom • John Judd • Joseph Fosco • Kamal Angelo  
Bolden • Karen Aldridge • Karen Kawa • Karen Kessler •  
Kirsten Fitzgerald • Lance Baker • Lawrence Grimm • Levi Holloway  
• Michael Shannon • Mierka Girtten • Mike Durst • Myron Elliott •  
Natalie West • Sadieh Rifai • Shade Murray • Sherman Edwards •  
Steve Haggard • Travis A. Knight

## **BOARD OF DIRECTORS:**

Lawrence Grimm • Erin Roberts • Becky Coleman • Eileen Hirsch •  
dado • Myron Elliott • Kirsten Fitzgerald • Jennifer Baumann •  
Monica Byrd • Georgia Casciato • Elizabeth Derrico •  
Heidi Hoblit Graham • Dozie Ibekwe • Michael Shannon •  
Tom Shapiro • Tom South • Guy Van Swearingen

## **STAFF:**

Artistic Director: Kirsten Fitzgerald  
Managing Director: Audrey Billings  
Associate Artistic Director: Travis A. Knight  
Marketing & Development Director: Stephanie Shum  
Audience Services & Development Associate: Grace Archer  
Development Coordinator: Sheri Tarrer  
Box Officers: Kiyumi Daniel, Whitney Dottery, Omar Fernandez,  
James Hoffman, Jessica Posey, Daniel Roy, & J.G. Smith

**To learn more about A Red Orchid Theatre, including how you  
can get involved with us or support future productions,  
visit our website at [aredorchidtheatre.org](http://aredorchidtheatre.org).**