



A
RED
ORCHID
THEATRE

THE MOORS

BY JEN SILVERMAN

DIRECTED BY KIRSTEN FITZGERALD

Contents

- 3** Welcome to ***The Moors***
- 6** Cast & Creative Team Bios
- 17** Thanks to Our Supporters!

To Advertise

Contact: Managing Director **Abigail Madden**
(312)943-8722 or abigail@aredorchidtheatre.org

Graphic Design **Andrew Madden**
Programs **Abigail Madden**

A Red Orchid Theatre Presents

THE MOORS

By **Jen Silverman**

Directed by **Kirsten Fitzgerald* +**

Featuring

**Karen Aldridge*+, Audrey Billings+, Dado*, Jen Engstrom*+,
Christina Gorman, Guy Van Swearingen*+**

Scenic Design by **Milo Bue**

Costume Design by **Myron Elliott-Cisneros* ^**

Lighting Design by **K. Story**

Sound Design by **Jeffrey Levin**

Prop Design by **Therese Ritchie**

Fight & Intimacy Direction by **Christina Gorman**

Music & Vocal Direction by **Elenna Sindler**

Technical Direction by **Andrew Glasenhardt**

Stage Management by **Kathleen Dickinson+**

Assistant Stage Management by **Paul Martin & Lauren Krohn**

Assistant Direction by **Ava Calabrese Grob**

Production Management by **Corey Bradberry**

Public Relations by **Cathy Taylor, PR**

* Ensemble Member of A Red Orchid Theatre

+ Member of Actor's Equity Association, Union of Professional Actors and Stage Managers

^ Member of United Scenic Artists-Local USA 829-IATSE



THE MOORS is presented by arrangement with Concord Theatricals on behalf of Samuel French, Inc. www.concordtheatricals.com

Off-Broadway premiere produced by The Playwrights Realm
(Katherine Kovner, Artistic Director; Roberta Pereira, Producing Director)
in January 2017

World Premiere produced by
Yale Repertory Theatre, New Haven, Connecticut
James Bundy, Artistic Director
Victoria Nolan, Managing Director

THE VIDEOTAPING OR MAKING OF ELECTRONIC OR OTHER AUDIO AND/OR VISUAL RECORDINGS OF THIS PRODUCTION OR DISTRIBUTING RECORDINGS ON ANY MEDIUM, INCLUDING THE INTERNET, IS STRICTLY PROHIBITED, A VIOLATION OF THE AUTHOR'S RIGHTS AND ACTIONABLE UNDER UNITED STATES COPYRIGHT LAW.

**A note from the Director of
THE MOORS:**

More and more, I think of *The Moors* as our anthem to boundlessness. In directing Jen Silverman's brilliant and subversive ode to identity and duality, I find myself occupying a chair that I have historically felt belonged to others. We are all, every one of us, considering our purpose and place in the world, and so often this begins with our bounds: what we *can't* do, or what we are *expected to* do. Our environment and our sense of safety have been tossed around a bit these last couple years, and I am honored to be interrogating who we are out on these lawless moors with these artists and with you, our audience.

KIRSTEN FITZGERALD (Director)
Artistic Director
December 2021

THE MOORS

Cast & Creative Team

Cast (In Order of Appearance)

Agatha.....	Karen Aldridge*+
Huldey.....	Christina Gorman
Emilie.....	Audrey Billings+
Marjory.....	Jen Engstrom*+
The Mastiff.....	Guy Van Swearingen*+
A Moor-Hen.....	Dado*

Understudies

U/S Agatha.....	Jennifer Jelsema
U/S Huldey.....	Capri Gehred-O’Connell
U/S The Mastiff.....	Matthew Lunt
U/S Marjory/A Moor-Hen.....	Stephanie Shum
U/S Marjory.....	Maria Stephens
U/S A Moor-Hen.....	Preeti Thaker
U/S Emilie.....	Samantha Vosmaer

* Ensemble Member of A Red Orchid Theatre

+ Member of Actor’s Equity Association, Union of Professional Actors and Stage Managers

Please turn off all cell phones and keep face masks on.

LAND ACKNOWLEDGEMENT:

A Red Orchid Theatre sits upon the traditional homelands of the Council of the Three Fires: The Odawa, Ojibwe and Potawatomi Nations. Many other Tribes like the Miami, Ho-Chunk, Menominee, Sac, and Fox also called this area home. Located at the intersection of several great waterways, the land naturally became a site of travel and healing for many Tribes. American Indians continue to call this area home, and now Chicago is home to the sixth largest Urban American Indian community that still practices their heritage, traditions, and care for the land and waterways. Today, Chicago continues to be a place that calls many people from diverse backgrounds to live and gather here. Despite the many changes the city has experienced, both American Indians and A Red Orchid see the importance of the land and this place that has always been home to many diverse backgrounds and perspectives.

Creative Team:

Playwright.....	Jen Silverman
Director.....	Kirsten Fitzgerald* +
Scenic Designer.....	Milo Bue
Costume Designer.....	Myron Elliott-Cisneros* ^
Lighting Designer.....	K. Story
Sound Designer.....	Jeffrey Levin
Prop Designer.....	Therese Ritchie
Fight & Intimacy Director.....	Christina Gorman
Music & Vocal Director.....	Elenna Sindler
Technical Director.....	Andrew Glasenhardt
Stage Manager.....	Kathleen Dickinson+
Asst. Stage Manager.....	Paul Martin
Asst. Stage Manager.....	Lauren Krohn
Production Manager.....	Corey Bradberry
Asst. Director.....	Ava Calabrese Grob
Dramaturg.....	Dianne Nora
Scenic Painter.....	Molly Cornell
Public Relations.....	Cathy Taylor, PR

* Ensemble Member A Red Orchid Theatre
+ Member of Actor’s Equity Association, Union of Professional Actors and Stage Managers
^ Member of United Scenic Artists-Local USA 829-IATSE
#Member of the Stage Directors & Choreographers Society

Special Thanks to THE MOORS Production Sponsors:
Barbara & Randy Thomas

Special Thanks to our Saints Ushers!

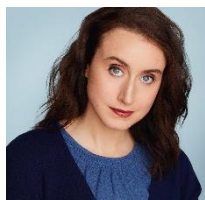
For helping bring this production to life, we’d also like to thank:

Andy Madden, Marti Lyons

CAST



KAREN ALDRIDGE (Agatha) made her AROT debut in *Victims of Duty* and has been a proud ensemble member since 2019. Other Chicago theatre credits include: *Hamlet*, *Tug of War – Parts 1 & 2*, *Twelfth Night*, *Macbeth*, *Edward II*, *Love's Labour's Lost* (Chicago Shakespeare Theatre); *The Qualms*, *Clybourne Park*, *Man From Nebraska* (Steppenwolf Theatre Company); *How To Catch Creation* (BTAA Nomination), *Trinity River Plays* (Jeff Award Nomination Best Actress), *Ballad of Emmett Till*, *The Cook* (Jeff Award Nomination Best Actress), *Proof* (Goodman Theatre), *Seagull* (Writers' Theatre); *Far Away*, and *In The Blood* (Jeff Award Nomination Best Actress, BTAA Ruby Dee Award; Next Theatre). Karen also originated the role of Mrs. Phelps in the production of *Matilda: The Musical* on Broadway and starred in the international tours of *Le Costume* (2001- 2002) and *Battlefield* (2017 -2018) both directed by Peter Brook. Television credits include *Fargo* (FX), *The Get Down* (Netflix), *Chicago Med/Fire* (NBC), *BOSS* (STARZ!), and *Blue Bloods* (CBS).



CHRISTINA GORMAN (Huldey) is thrilled to return to AROT after appearing as Linda in 3C. Chicago credits include *Rutherford and Son* (Timeline), *The River* and *Cyrano* (Boho Theatre), *Men Should Weep* (Jeff Citation - Best Play) and *Stage Door* for Griffin Theatre, and *Hannah and Martin*, *The Tall Girls*, *The Grown Up*, and *The Rose Tattoo* among others at Shattered Globe Theatre, where she is an ensemble member. She has also had the pleasure to work with Steppenwolf Theatre Co., Stage Left, City Lit, and Buffalo Theatre Ensemble. On-camera credits include *Chicago Med* and motion/performance capture for the videogame *Mortal Kombat 11* (as Cassie Cage). Thanks to F.B. and Mahm. She is represented by 10 Talent.

christinagormanactor.com

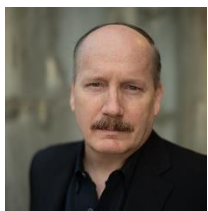


AUDREY BILLINGS (Emilie) is thrilled to be making her A Red Orchid debut. She was last seen as Mary Bailey (and others) in *It's a Wonderful Life: Live in Chicago!* with American Blues Theater, where she is an Artistic Affiliate. Previous credits include Christmas Eve in the long-running production of *Avenue Q* at the Mercury Theater, Mary Magdalene in *Jesus Christ Superstar*, Antonia in *Man of la Mancha*, and Hodel

in *Fiddler on the Roof*. She has worked at the Paramount Theatre, Marriott Theatre in Lincolnshire, Drury Lane in Oakbrook, Theatre at the Center, and Lookingglass Theatre Company, and is a proud member of Actor's Equity. Much love to Nick, and thank you all for masking up!



JENNIFER ENGSTROM (Marjory) is happy to be home at A Red Orchid. An ensemble member since 2003, Jen has appeared in *Small Mouth Sounds*, *Simpatico*, *Hothouse*, *Eric LaRue*, *Fatboy*, *The Mutilated*, *The Fastest Clock in the Universe*, and *Kimberly Akimbo*. Jen was most recently seen as RC in Steppenwolf Theater's production of *Bug*, a play that enjoyed its Midwest premiere at A Red Orchid 25 years ago. Other Chicago credits include work at Goodman, Writers, Northlight and Timeline Theaters. Thank you for choosing live theater!



GUY VAN SWEARINGEN (The Mastiff) most recently appeared as Stan in *Sweat* at the Huntington Theatre in Boston. He is the founding Artistic Director and an Ensemble Member of A Red Orchid Theatre, where he has appeared in over a dozen productions, including *The Nether*, *Red Handed Otter*, *The Sea Horse* (Jeff Nomination), *Simpatico* (Jeff Nomination) and the World Premiere of *The Opponent* (which was also produced at 59E59 in NYC). Regional credits include *Simpatico* at the McCarter Theatre, *The Sign in Sidney Brustein's Window* at the Goodman Theatre, the World Premiere of *Taking Care* and a revival of *The Time of Your Life* at Steppenwolf (which transferred to Seattle Rep and A.C.T.) and *Eleven Rooms of Proust* (a Lookingglass/ About Face/ Goodman Theatre collaboration). Other local theatres he's appeared with include Defiant, Plasticene, Famous Door and Mary Arrchie. Film credits include *Captive State*, *The Dilemma*, *The Merry Gentleman*, *Take Shelter*, *Public Enemies*, *The Weatherman*, *Ali*, *Janie Jones* and *The Unborn*. TV credits include *Fargo* (FX), *Chicago Fire* (NBC), *Boss* (STARZ), *Sirens* (USA), *Detroit 1-8-7* (ABC), *Gifted Hands: The Ben Carson Story* (TNT), *The Beast* (A&E), *Turks and Early Edition* (CBS). Look for him recurring on the show *Power Book 4: FORCE* premiering on STARZ this Feb.



DADO (A Moor-Hen) directed Jen Silverman's *Phoebe in Winter* in 2018 at Facility Theatre, so she is terribly excited to be in *The Moors*. She is an ensemble member at A Red Orchid Theatre, and her most recent AROT productions were *Killing Game* by Eugene Ionesco and *Grey House*, in

which she originated the role of The Ancient. Her AROT production of Sam Shepard's *Simpatico* moved to the McCarter Theatre. Dado portrayed Karla Stock in the world premiere of AROT's production of *Traitor* by Brett Neveu, directed by Michael Shannon; this adaptation of Ibsen's *Enemy of the People* won three Joseph Jefferson Awards. Dado is the recipient of the Edes Prize from the University of Chicago and produced David Lang's chamber opera *little matchgirl passion* (Facility Theatre) with this award. She is also the director of Erik Satie's surrealist *Ruse of Medusa* (Facility Theatre) and the original *Vacuum Cleaner Opera*, which was produced at the MCA and Prop Thtr. At A Red Orchid, she has directed *The Mutilated*, *The Unseen*, *The Room*, *Megacosm*, *Fastest Clock in the Universe*, *The Grey Zone*, and others. At this time, Dado is a professor at Purdue University Northwest and holds an MFA in visual art from the University of Chicago.



JENNIFER JELSEMA (U/S Agatha) is incredibly grateful to return to A Red Orchid Theatre where she last performed on stage in *Do You Feel Anger?*. Represented by Paonessa Talent Agency, Jennifer has appeared in over 40 film, television, and theatre productions. She was most recently featured in the films *Good Guy with a Gun* (dir. John Mossman), *Broadcast Signal Intrusion* (dir. Jacob Gentry), *Unclaimed* (dir. T.W. Miller), and *Come as You Are* (dir. Richard Wong). Television appearances include *Zen Room*, *Chicago Med*, *Empire*, and *Chicago Fire*. On stage, Jennifer has performed in *At the Table*, *Water by the Spoonful*, *Circle Mirror Transformation*, and *Distracted*, among other productions.



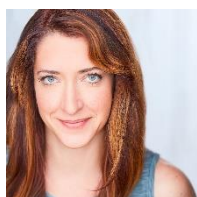
CAPRI GEHRED-O'CONNELL (U/S Huldey) is delighted to be working with the A Red Orchid Theatre team for the first time! Some of her favorite recent credits include *The Two Character Play* (Theatre L'Acadie, where she is a company member), *Night Tide* (Towle Theater) and *Measure for Measure* (Any Other Name Theater Company). She is a recent graduate of Wesleyan University, where she performed in main stage productions as Segismundo in *Life is a Dream* and Jenny/Marge in *Mr. Burns, a Post-Electric Play*.



SAMANTHA VOSMAER (U/S Emilie) is thrilled to be joining A Red Orchid, for her first time ever, on this incredible production of *The Moors*. Recent on-camera credits include *Off the Gryd*, *Lockjaw* and pilot series *The Home*. Recent online theatre credits include *Breast in Show* (Virtual Table Readers); *Words of Love* (Kirk Players); *The Callback* (TQQ Theatre Company); *Love Ben, Love Emma* (Wayward Sisters Theatre Company); and *The Future* (Women's Theatre Alliance). Samantha has a Bachelor's Degree in Theatre/Musical Theatre from Loyola University in Chicago and is represented by Dream Team Talent Agency and Docherty Talent Agency.



STEPHANIE SHUM (U/S Marjory & A Moor-Hen) is thrilled to be working with A Red Orchid for the first time! Past credits include *The Crucible* and *The Great Leap* U/S (Steppenwolf Theatre); *You Deserve to Be Here* (Goodman Playwrights Unit) and *Hummingbird* (Goodman New Stages); *The Gradient* (Victory Gardens Ignition Festival); *Men on Boats* (American Theater Company); *Do Wasps Have Desires?* (Milwaukee Rep); *Love in the Time of Jonestown - a radio play*, *Small World*, *Merge*, *Kin Folk*, *reWILDing Genius* and *Kate and Sam Are Not Breaking Up* (The New Coordinates); *A Story Told in Seven Fights* (The Neo-Futurists); *The Gulf* U/S (About Face); *Second Skin* (Wildclaw); *Strange Heart Beating* (Cloudgate); *We Are Pussy Riot* (Red Tape). She is Co-Artistic Director of The New Coordinates, a company member with Red Tape Theatre, and a graduate of The School at Steppenwolf. www.stephanieshum.com



MARIA STEPHENS (U/S Marjory) was last seen onstage here in some of A Red Orchid's Incubator Series shows, including *A Night Out*, *Celebration*, and *The Silence That Follows*. Elsewhere in Chicago, Maria has worked with Redtwist, The Gift, Broken Nose, Trap Door, Hell in a Handbag, The Factory, The Artistic Home, Apple Tree Theatre, The Mammals, and Facility Theatre, where Maria is a founding company member; she was last seen at Facility as Phoebe in *Phoebe in Winter*, by Jen Silverman. Maria is represented by Big Mouth Talent.



PREETI THAKER (U/S A Moor-Hen) is an actor based in Chicago. She is thrilled to be making her Red Orchid Theatre debut in *The Moors*. After leaving medical school in 2017, she decided to brave the world of acting and went on to do the School at Steppenwolf in 2018. She has since worked with Steppenwolf Theatre, Jackalope Theatre and Court Theatre.

Preeti is proudly represented by Shirley Hamilton Talent.



MATTHEW LUNT (U/S The Mastiff) has dreamed for a long time about working with A Red Orchid Theatre. Past companies include The House, Victory Gardens, Stage Left, Pride Films and Plays, Redtwist, and Waltzing Mechanics, to name a few. He is also one of the proud founders of Bramble Theatre Company, as well as an accomplished

graduate of the School at Steppenwolf. When not acting, Matthew is planning his next camping trip or making friends with other people's dogs.



OLD TOWN ALE HOUSE

Chicago's Premier Dive Bar!

219 W. North Ave.

Sun-Fri: 3pm-4am, Sat: 3pm-5am,

Follow Us on Facebook!

CREATIVE TEAM



JEN SILVERMAN (Playwright) is a New York-based writer. Her plays include *Witch* (Writers Theatre, The Geffen Playhouse in LA); *Collective Rage: A Play in Five Betties...* (Woolly Mammoth, Southwark Playhouse in London, MCC); *The Roommate* (Actor's Theatre of Louisville, Williamstown Theatre Festival, Steppenwolf

directed by Phylicia Rashad, Long Wharf, South Coast Repertory, Theater Biel/Solthurn in Switzerland, Salón Teatro in Spain, etc.); and *The Moors* (The Playwrights Realm, Yale Repertory Theatre, Seymour Center in Sydney, Red Stitch in Melbourne). Jen is a member of New Dramatists, and an affiliated artist with The Playwrights Center in Minneapolis. She's a two-time

MacDowell Colony fellow, a recipient of a New York Foundation for the Arts grant, the Helen Merrill Award, an LMCC Fellowship, and the Yale Drama Series Award. She was the 2016–2017 Playwrights of New York (PoNY) Fellow at the Lark. Jen is the author of *The Island Dwellers*, a collection of interlinked stories published by Random House and longlisted for the 2019 PEN America Literary Awards. Her debut novel, *We Play Ourselves*, was recently selected by *O Magazine* as an “LGBTQ Book That Will Change the Literary Landscape.” Her work has appeared in *The Paris Review Daily*, *Ploughshares*, *The Gettysburg Review*, *Prairie Schooner*, *The Baffler*, and *LitHub* among others. Jen also writes for TV and film (*Tales of the City* on Netflix, original work in development with FX, A24, Netflix, Ardman Animations and Annapurna). Education: Brown, Iowa Playwrights Workshop, Juilliard.



KIRSTEN FITZGERALD (Director) was most recently on stage in front of a live audience at The Goodman Theatre in *Roe* and here in *Grey House*. She is a proud member of the Artistic Ensemble here at A Red Orchid and has served as Artistic Director since 2008. It has been many years since she

tried on this Director hat, and she is thrilled to be doing so for the first time here at her artistic home. As an actor, she’s been fortunate enough to play with folks at Goodman, Steppenwolf, Victory Gardens, Chicago Shakes, Utah Shakes, Shattered Globe, Remy Bumppo, Plasticene, Prop, Next, Famous Door, Defiant Theatre and more.

MILO BUE (Set Design) is excited to be joining A Red Orchid Theatre on this production. His design credits include *dirty butterfly* (The Blind Owl/Halcyon Theatre/Theatre on the Lake), *Wolf at the End of the Block* (Teatro Vista), *Spamilton* (Forbidden Broadway), *Pinocchio* (Neverbird/Chicago Children’s Theatre), *Hollow/Wave* (Silk Road Rising) and *Franklinland* (Jackalope Theatre). Associate design credits include *Beauty and the Beast* (Paramount Theatre), *The King’s Speech* (Tour), and *The Prince of Egypt* (Dominion Theatre London). He has assisted on productions at Steppenwolf Theatre, Goodman Theatre and many others. Milo is currently working towards his MFA in the graduate stage design program at Northwestern University.



MYRON ELLIOTT-CISNEROS (Costume Design) is happy to return home to A Red Orchid, where he is an ensemble member. Previous AROT collaborations include *Small Mouth Sounds*, *An Evening at the Talk House*, *3C*, *The Nether*, *Pilgrim’s Progress*, *In a Garden*, and *The Opponent*. Other work: *Monuments*, *The Brink* (Walkabout Theatre); *Girl Crazy*, *The Pajama Game*, *Annie Get Your Gun* (Ohio Light

Opera); *The Heart is a Lonely Hunter*, *To Kill a Mockingbird* (Steppenwolf for Young Adults); *Oblivion*, *Ski Dubai*, *Honest*, *Sex with Strangers* (Steppenwolf First Look); *Dental Society Midwinter Meeting* (16th Street/Theatre on the Lake); *Eclipsed* (Northlight Theatre); and *Speech & Debate* (American Theatre Company). Collaborations include productions with Stages St. Louis, Concert Dance Inc., Cincinnati Playhouse, Indiana Repertory Theatre, Aurora University, College of Wooster, and Berkshire Theatre Festival, as well as a residency at The Banff Centre for Arts and Creativity. Recent design projects include *Passage* at University of Illinois Chicago, where he is an Assistant Professor. Website: www.myronelliott.com. Instagram: @domesticated_bear.

K. STORY (Lighting Design) is a Chicago-based designer working internationally in Theater and Dance. Her designs have been seen in Australia, Korea, and the Turks and Caicos Islands; she has toured internationally as the Lighting Supervisor for Hubbard Street Dance Chicago and Pilobolus Dance Company. Chicago Theater credits include work at Steppenwolf Theater, The Goodman, Drury Lane, and Lookingglass Theatre. She holds a Master of Fine Arts from Northwestern University in Stage Design and a Bachelor of Arts in Dance Production and Management from the University of Nevada, Las Vegas.



JEFFREY LEVIN (Sound Design) is a composer, sound designer, and musician based in Chicago, IL. Jeffrey returns to A Red Orchid Theatre after having previously designed sound for *The Haven Place*, *Small Mouth Sounds*, and *Grey House* (winner of the 2020 Joseph Jefferson Award for Sound Design). Jeffrey has contributed original music and sound designs for over 150 productions for various theaters in and outside of Chicago. In addition to A Red Orchid, he has collaborated with Goodman, Steppenwolf, Court Theatre, Northlight, Victory Gardens, Timeline, Steep, DePaul University, Columbia College, and more. Regionally, he has worked with American Players Theatre, The Gulfshore Playhouse, Asolo Repertory, Hope Summer Repertory Theatre, Denver Center for Performing Arts, and Children's Theatre Madison. Awards and recognitions in theatre include two Joseph Jefferson Award wins and twelve nominations for Sound Design and Original Music. He holds a Masters of Music from DePaul University and Bachelors of Music from Columbia College Chicago.

THERESE RITCHIE (Props Design) is a freelance designer based in the Chicagoland area. She had received the 2019 Ed Burbridge Award for her Scenic Design of *No Child* and the 2018 John Murbach Prize for Collaboration in Design after completing her undergraduate degree at Columbia College

Chicago. Previous credits include: Scenic Design for *As You Like It* (Elgin Community College), *Girls and Dolls* (Northern Illinois University), *Neither* (Lifeline Theatre), *Labyrinth* (Broken Nose Theatre), *A Bright New Boise* (Northern Illinois University), *Blue Stockings* (Promethean Theatre), *Now or Later* (Intrinsic Theatre), *Annie KIDS* (Wilmette Children's Theatre), *Girl in the Red Corner* (Broken Nose Theatre), *The Truth About Santa* (Intrinsic Theatre), *No Child* (Definition Theatre), *Wild Party* (Columbia College Chicago), and *Caroline or, Change* (Columbia College Chicago).



ELEENNA SINDLER (Music/Vocal Director) is so excited to be back at AROT working on *The Moors*! She has worked at AROT in many different roles, most recently pre-pandemic as a sound designer on *Do You Feel Anger?*, directed by Jess McLeod. She also worked as the composer and music director on AROT's production of *Killing Game*,

directed by ensemble member Dado. Together, they also premiered an original vacuum cleaner opera installation at the Museum of Contemporary Art Chicago and Prop Thtr, through *The Storefront Theater Project*. As a performer-composer, she has performed original compositions at music festivals EarTaxi, Omaha Under the Radar, and the Internationalen Ferienkurse für Neue Musik (Darmstadt, Germany). This year she also released an EP titled *Lullaby Baby*, with Jesse Langen & Amanda DeBoer Bartlett (Hasco Duo), available on all streaming platforms.



CHRISTINA GORMAN (Fight/Intimacy Director) is thrilled to return to AROT, where she has fight/intimacy designed *Victims of Duty*, *Traitor*, *33 to Nothing*, and *The Nether*, among others. Fight/Intimacy credits include: *BLKS*, *Visiting Edna*, and *The Crucible* (Steppenwolf); *Commons of Pensacola* (Northlight); *Pomona*, *Red Rex*, *Lela & Co.*, *Wastwater*, *Posh*, and *Brilliant Adventures* (Steep Theatre); *Ragtime* (Griffin Theatre); and *Crime and Punishment*, *In the Heat of the Night*, *Our Country's Good*, and *The Whaleship Essex* (Shattered Globe Theatre). Christina also teaches acting and stage combat at Acting Studio Chicago.

ANDREW GLASENHARDT (Technical Director)



KATHLEEN DICKINSON (Stage Manager) is thrilled to be returning to A Red Orchid Theatre. Past shows include assistant stage managing *3C*, *Traitor*, *33 to Nothing*, *Victims of Duty*, *Small Mouth Sounds*, *Fulfillment Center*, *Killing Game*, and *Grey House*, and stage-managing *American Bottom* and *Sick by Seven*. Other stage assistant/stage

management credits include Steppenwolf Garage Rep, The House Theatre of Chicago, Remy Bumppo, Vitalist Theatre Company, Rasaka Theatre, Eclipse Theatre, and Collaboraction. Kathleen completed the 2013-2014 Stage Management Apprenticeship at Steppenwolf.



PAUL MARTIN (Assistant Stage Manager & COVID Safety Officer): Due to the pandemic, this is Paul's first return to a backstage role in a couple years. His last ASM production was *X-Mas Cuneo Remix* at the Sixteenth Street Theater during the 2019 winter holidays. Once theaters started to open again and resume their live productions, Paul thought

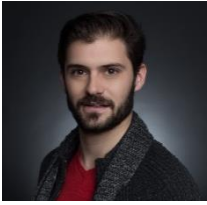
A Red Orchid Theater would be the place to be. And he was correct. He could not have asked for a more talented cast and crew to work with. When not attending rehearsals and making sure everyone followed safety procedures to avoid yet another outbreak of the COVID-19 virus, he works as a Substitute Teacher for Lincoln Middle School in the western suburb of Berwyn, Illinois. Paul is an avid theater-goer and is very excited to be a part of the Red Orchid Theater Company. He would like to give thanks to Kirsten for the opportunity, to Kathleen for teaching new stage management techniques and answering what must have felt like a thousand questions, and to everyone else who worked with him side-by-side, in a socially distanced way, on this project. Special thanks to his family and friends for their love, support, and encouragement throughout this process.



LAUREN KROHN (Assistant Stage Manager) is excited to join A Red Orchid Theatre as Stage Management Intern for Spring of 2022! Recent stage management credits include *The Nutcracker* and *Cinderella* with Syracuse City Ballet, *Matilda* with Syracuse Stage, and *Die Liebe der Danae* and *Mister Rogers' Operas* with Pittsburgh Festival Opera.

Recent other credits include lighting designer for The Quarry Theater's productions of *The Pitchfork Disney* and *This is Our Youth*, and assistant director for an independently produced, immersive production of Marsha Norman's *'Night, Mother*. This May, Lauren will graduate from Syracuse University with honors standing and two majors: a BFA in Stage

Management and a BA in Psychology. She is excited to launch her Chicago stage management career with *The Moors*!



COREY BRADBERRY (Production Manager) is a Chicago-based director and producer, Producing Artistic Director of A Theater in the Dark, and a Faculty Member at The Second City Training Center. Most recently, Corey directed *Shipwrecked! An Entertainment* this summer at Oil Lamp Theatre for its first outdoor summer season (2021

Broadway World Chicago “Best Production” nominee). In April 2021, Corey directed the audio play *A White Whale; Or, Moby Dick* (A Theater in the Dark), which won top prizes at the 2021 Atlanta Audio Fringe Festival and the 2021 Thornhill Theatre Festival. Corey has assistant directed with major institutions including the Second City and Atlanta’s Alliance Theatre. Corey is a 2015 Kennedy Center National Directing Fellow and was awarded the 2013 Emerging Artist Award from the City of Atlanta’s Office of Cultural Affairs. Education: M.F.A. Directing; B.A. Theatre & Performance Studies. Additional Training: Dell’Arte International School of Physical Theatre, the Second City Advanced Directing program. IG: @corey.bradberry. Website: www.coreybradberry.com



AVA CALABRESE GROB (Assistant Director) is a director, scenic designer, & deviser hailing from Dallas, Texas. She is immensely grateful to Kirsten and the entire *A Red Orchid* family for making her professional debut a wild and spectacular experience. Ava graduated May of 2020 from Wesleyan University (BA in Theater & English &

minor in African American Studies). She directed Jen Silverman’s *Phoebe in Winter* as her senior thesis and credits Silverman’s worlds as her favorite to play in. Previous directing work: *SYMP*: a multi-media queer confessional adapting Plato’s *Symposium*, *Oleanna*, *Marisol*, and *Dark Play or Stories for Boys*. Previous scenic design credits: *Action*, *No Replica*, *Tango Palace*, *Next to Normal*, *Stop Kiss*, & *Circle Mirror Transformation*. Upcoming Projects: *you can’t pay the bills with feelings*, a devised installation by The Dock. She would like to remind you that there can be no new world when the ones who build it are soaked in the blood of the old.



DIANNE NORA (Dramaturg) is a dramaturg, playwright, and comedy writer. She is the Head Writer - Breaking News for The Hard Times and a Headline and Features Contributor for *The Onion*, America's Finest News Source. Her plays have been recommended by *The Spectator* and *The New York Times*, America's Second Finest News Source. Di was a member of Goodman Theatre's Playwrights Unit,

where she was commissioned to write a new play about Ruth Bader Ginsburg, currently in development. Di assisted her mentor Tracy Letts on the world premieres of his plays *Mary Page Marlowe*, *Linda Vista*, and *The Minutes*, returning to Broadway in Spring 2022. Di's plays have been developed at Goodman Theatre, New Ohio Theatre, Capital Stage, Pipeline Theatre, and the Samuel Beckett Theatre. She's a graduate of NYU, Trinity College Dublin, and Columbia University School of the Arts. She's currently writing a novel, a new play, and several dumb jokes.



MOLLY CORNELL (Scenic Painter) is ecstatic to be joining the team on her most favorite play! This is her first production with A Red Orchid Theatre. She is currently the Scenic Charge at Northlight Theatre in Skokie, where she previously served as the Assistant for 2021. Other Chicago credits include Story Theatre, Lookingglass Theatre, Urban

Theatre Company, Akvavit Theatre, Dream Big Productions, and over 15 productions at Loyola University Chicago, where she recently graduated. Many thanks to her wonderful support system. More of her work can be found at mollycornellstudio.com, and @mollycornellstudio on Instagram.

Don't miss what's next at A Red Orchid!



LAST HERMANOS

By Exal Iraheta

April 21st – June 12th, 2022

Tickets on sale March 21st!

Support for our 2021-2022 Season

A Red Orchid Theatre thanks everyone who has generously donated to our current season!

FOUNDERS CIRCLE

These individuals provide inspirational support, allowing A Red Orchid to take the artistic risks necessary to remain a premiere destination for cutting-edge performance. All donors have made a generous multi-year pledge. To join this distinguished group, call **Hope Gundlach** at **312.943.8722**.

\$10,000+

Nikki Pantzlaff

\$5,000+

Donna, Jules, & Louisa Welch • Grayson Holmbeck • Guy Van Swearingen • Lawrence Grimm & Susan Bowen • Lynn Hauser & Neil Ross • Michael Shannon

RED LEAGUE

The generosity of A Red Orchid's Red League members annually provides vital support for A Red Orchid's artistic programming. In recognition of their contributions, members enjoy behind-the-scenes access and are invited to private events with the artists of A Red Orchid.

\$5,000+

Jane P. Madden • Randy & Barbara Thomas

\$1,000+

Alice Brunner • Anne & Greg Taubeneck • Carolin & Gordon Kirk • David Sensibar • Deborah Garber & John Tielsch • Ed Calkins • Geoffrey Smith & Catherine Stewart • Gloria Lehr • James & Joannell McKenna • John Bierbusse • Linda Legner & James A. Hochman • Margaret Stone • Marla Forbes & Al DeVaney • Miriam Beale • Nikki Spiess • Rebecca & Wilbur Mills • Sally & Steve Seiple

ANNUAL FUND

A Red Orchid thanks the many patrons who help bridge the gap between annual operating costs and ticket sales. To all our supporters, we recognize you for making possible another season of vibrant, daring, and *necessary* theatre.

\$500+

Andrea Mitchel • John Judd • Julie & Randy Randall • Karen & Frank Schneider • Kathleen Grady & Victor Grimm • Mair Hill • Mary & Jim Miller • Jon & Mollie Stromberg • Nancy Timmers • Noreen Gallagher • Paul Baucke • Robert Friedman • Robert Murphy & Emilio Williams • Sharon Perazzoli • Susan Schwartz • Virginia & Gary Gerst

\$100+

Alan, Jackie, Sean, & Kaitlin Smith • Andra & Irwin Press • Ann Raven • Anonymous • Barbara Brooks • Barbara Grodzins • Barry Carlson • Beverly Pinaire • Brandi Brooks & Tim Losch • Brian Greene • Cait Gallagher • Carol Eastin • Charles Tausche • Chris & Kelly Reed • The Cutler Family • Deborah Oestreicher & Victor Magar • Debra & Stuart Baker • Dee & Ronald Tevonian • Ellen Shannon • Estelle Spector • Fran & Bob Saunders • Frank Carlson • Gail Shannon • The Galanti Family • Georgia Casciato • Harriet & Paul Koepke • Jaye & John Golanty • Jerry & Michelle Thompson • Jerry Proffit • Joe Dempsey • John & Claudia Boatwright • John T. Ahern, Jr. • Joshua & Laura Kerr • Julie Berggren & Fred Tadrowski • Julie M. Koerner • Karen Gatsis Anderson • Karen

Kawa • Karen L. Kessler • Kathleen Bell • Kay Bowman • Kay Shannon • Kyle Stoffers • Liat & Tali Tzur • Linda & Michael Welsh • Lois & James Hobart • Margaret & Kent Neveu • Marisa Wegrzyn • Mary Ann Galanti • Mary Hayes • Mary Ward • Matilda Wilhoite • Maureen O'Rourke • MB & Joe Hoerner • Mercedes Straus • Michelle Courvais • Milton Esbitt • Molly Soat • Nancy Schaefer • Nancy Slattery • Nic Dimond • Pat Herman • Richard & Barbara Carter • Richard Vitkus & Ann Allison • Roberta Zabel • Rory Sullivan • Sam Lounsbury • Steve & Pam Geocarlis • Steve & Sara Tamplin • Steve Schine & Loretta Rezos • Susan Gray • Tara Gibney • Thomas Ray • Timothy Sherck • Tom & Teresa Connelly • Victoria Eley • William Parkhurst

\$20-99

Aaron Sprecher • Abby Mills • Adam Morgan • Alice Blount • Allison & Brad Levin • Amanda Court • Andres Hernandez • Andrew Hamingson • Anne Kohn • Ann Kroll • Ann McCartney • Archibald Bryant • Audrey Stone • Aviva Samet • Bev & & Steve Pinaire • Bonnie Seebold • Brent & Jessica Ervin-Eickhoff • Brian & Giulia Sindler • Brock Rizey • Carlene & Ronald Goodin • Carole & David Dibo • Cary & Helene Flynn • Cathy Tschannen • Chris & Mandy Walsh • Christian Sheppard • Chris Toft • Connie Sabin • Courtney Hurley • Dana Wahrenbrock • Danielle Kaynor • Daniel Rice • Mr. Daniel T. Fitzpatrick • Dave Tolchinsky • David & James Baran Robertson • Dee Tevonian • Don Doughman • Donna Higgins • Deborah & Mike Maggio • Edie Canter • Eve Moran • Fanchon & Bruce Simons • Gloria Julien • Greg Laux • Jackie Abrams • Jackie Lustig • Jeff Horler • Jennifer Lizzadro • Jess Jones • Jill Feldman • Joanne Zolomij • Johanna Entwistle • John L. Jenkins • Jon & Bonnie Klem • Julia Korenman • Juliet Heimberg • Karen Ptak • L.A. Ross • Leala Avdich • Leeann Torske • Leigh Bienen • Linda Crowder • Lin Selby • Lori Lauer • Louise Moriarty • Maggie Bobbitt • Margaret Traylor • Marie Noland • Mari Philipsborn • Mark Bookman • Matt Miller • Melanie Farnon • Merrill Hoyt • Michael & Courtney Cronin • Mitch Carol Durst • Nancy Goldstein • Nancy Zohar • Patricia Donegan • Patricia Emmer • The Pramuk Family • Rebecca Braithewaite • Rebecca Mills • Richard Petrillo • Roberta Buchanan • Roberta Cook • Robin Breslin • Ruth McGowan • Sandi Bartlett Massachusetts • Sara Greenspan • Sarah Stec • Savion Agard • Sheri & Josh Flanders • Stephen Goranson • Stephen Leaver • Steven Bair & Michael Snyder • Suzanne Stock • Tara Mallen • Teddy Eley • Theodora Rand • Thomas Bearrows • Tom Mula • Val Ericsson • Virginia Fitzgerald • Wade

GIFTS IN HONOR

In honor of Jon Tai

Aaron Sprecher

In honor of Karen Aldridge

Margaret Taylor

In honor of Kay Shannon

Kathleen Bell

In honor of Lance Baker

Nancy Schaefer

In honor of Larry Grimm

Emilio Williams

In honor of Nick Offerman

Nicole Pantzlauff

In honor of Steve Schine

Stephen Leaver

In memory of Donald Shannon

Gail Shannon

In memory of J. Roy Burton

Alan, Jackie, Sean, & Kaitlin Smith

Brian Greene

Carlene & Ronald Goodin

David Flynn

Harriet & Paul Koepke

James & Joanell McKenna

Mary & Jim Miller

Rodney Burton

This list reflects donations made between January 01, 2021 and December 13, 2021.

*Please accept our apologies for any errors and bring them to our attention by contacting **Hope Gundlach** at **312.943.8722** or hope@aredorchidtheatre.org.*

A Red Orchid Theatre's 29th Season is also supported in part by:

CORPORATE, FOUNDATION & GOVERNMENT CONTRIBUTORS

\$25,000+

Anonymous • The Paul Angell Foundation

\$10,000+

The Alphawood Foundation • The Driehaus Foundation • The Illinois Arts Council • The Shubert Foundation

\$5,000+

The Young Leaders Fund, Chicago Community Trust

\$1,000+

Legacy Hospitality

\$500+

The Actors' Equity Foundation • The Donnelley Foundation • PlayPerView • The Saints Organization

\$100+

The Jewish Federation of Metropolitan Chicago • The National Council of Jewish Women

EVENT SPONSORS & COMMUNITY BUSINESS SUPPORTERS

80 Proof • Adobo Grill • Benchmark • Cobbler Square Lofts • Corcoran's • The Fudge Pot • Kamehachi • The Kennison • LG's Bar • Orso's • Wintrust Bank



PAUL M. ANGELL
FAMILY FOUNDATION

COBBLER **STREET** SQUARE



MacArthur
Foundation



THE SHUBERT
FOUNDATION INC.



WINTRUST
Old Town BANK

*Not getting what you expected
from your IT solutions?*



With 25 years of wide-ranging technology experience, we provide the perfect solution to fit your IT needs.

- Network Design and Security
- Backup and Disaster Recovery
- Hardware and Software Implementation
- Microsoft Certified Partners specializing in Server/Workstation, Office 365 solutions, MS Azure Security
- Proactive Systems Monitoring and Anti-Virus Solutions



**Business Information
Technologies, LLC**

(630) 396-3012 - www.bit0101.com



Subscribing to our **29th Season** means investing in one of Chicago's most adventurous artistic endeavors. As a subscriber, you receive:

- Guaranteed **reserved seats**
- Guaranteed ticket & date **flexibility**
- Guaranteed no-fee **ticket exchanges**

Become a FLASHPASS subscriber today!

The Two-Show FLASHPASS (\$60): Includes one ticket to each of the 2 shows in our 29th Season, excluding Opening Night.

The Preview FLASHPASS (\$40): Includes one ticket to a preview performance of each of the 2 shows in our 29th season.

For more information: visit www.aredorchidtheatre.org or call our box office at (312)943-8722. Box office hours: M – F, 12 – 5 pm.



BOARD MEMBERS support the artistic vision of the Ensemble and serve as enthusiastic, informed ambassadors for the theatre while proactively collaborating with the Administrative and Artistic leadership to pursue funding opportunities and advantageous connections for the organization.

ASSOCIATE BOARD MEMBERS are young professionals who serve as an advisory volunteer committee. They work together to increase audience awareness, fundraise, and celebrate artistic innovation.

For more information about joining the Board or Associate Board, email Managing Director Abigail Madden at: abigail@aredorchidtheatre.org.



*Members of A Red Orchid's
Board & Ensemble*